

Calhoun County

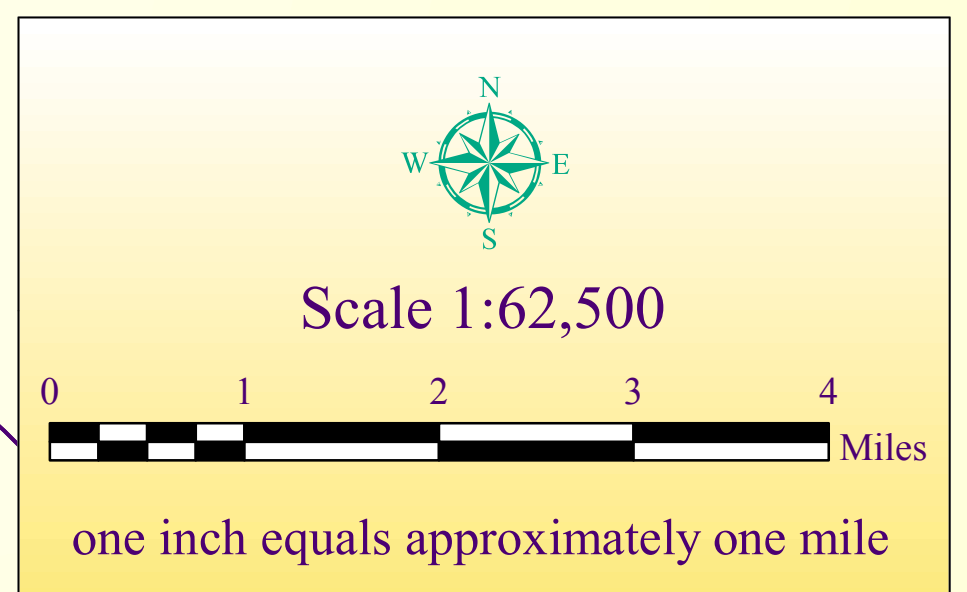
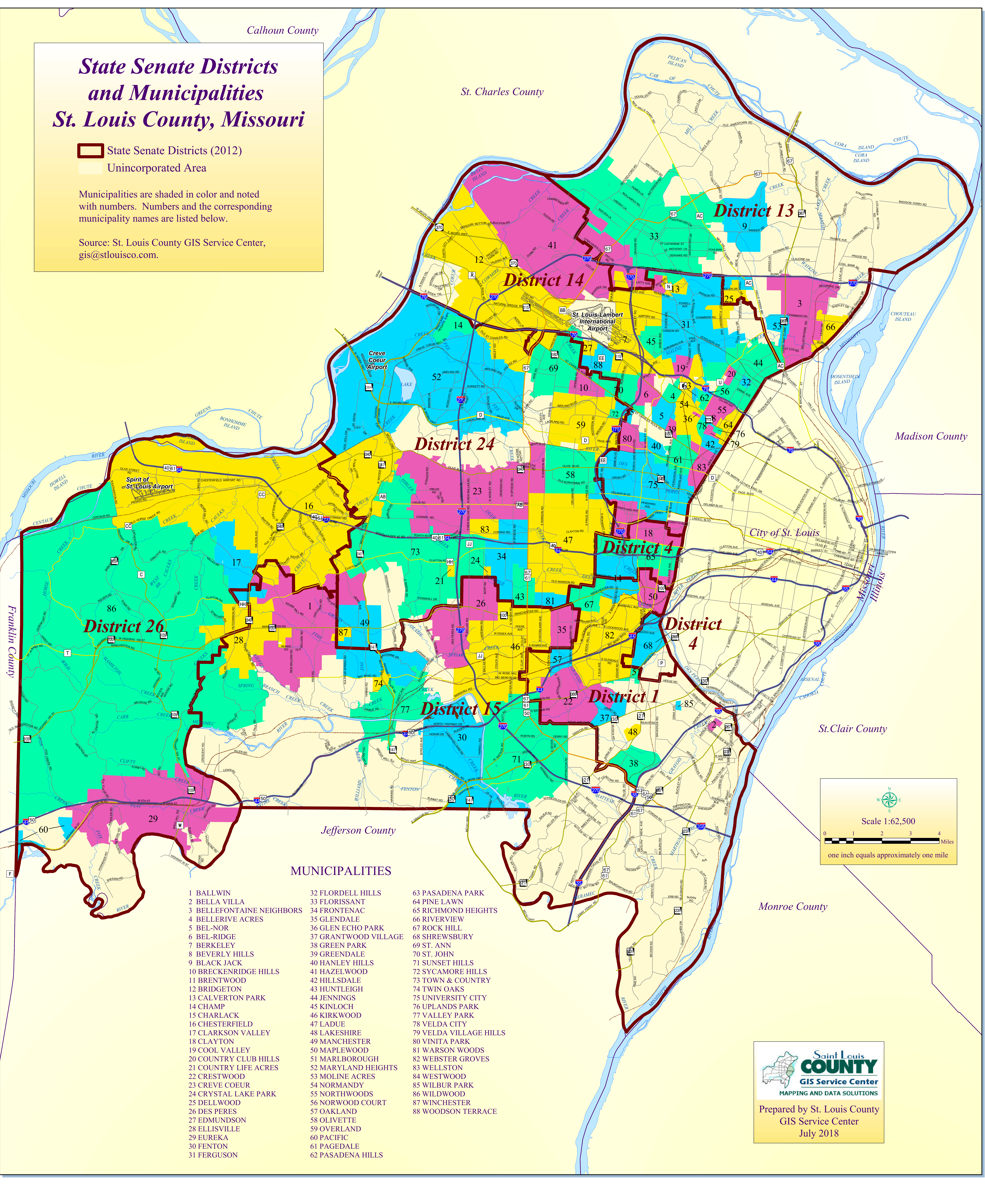
St. Charles County

State Senate Districts and Municipalities St. Louis County, Missouri

- State Senate Districts (2012)
- Unincorporated Area

Municipalities are shaded in color and noted with numbers. Numbers and the corresponding municipality names are listed below.

Source: St. Louis County GIS Service Center, gis@stlouisco.com.



MUNICIPALITIES

- | | | |
|---------------------------|----------------------|------------------------|
| 1 BALLWIN | 32 FLORELL HILLS | 63 PASADENA PARK |
| 2 BELLA VILLA | 33 FLORISSANT | 64 PINE LAWN |
| 3 BELLEFONTAINE NEIGHBORS | 34 FRONTENAC | 65 RICHMOND HEIGHTS |
| 4 BELLERIVE ACRES | 35 GLENDALE | 66 RIVERVIEW |
| 5 BEL-NOR | 36 GLEN ECHO PARK | 67 ROCK HILL |
| 6 BEL-RIDGE | 37 GRANTWOOD VILLAGE | 68 SHREWSBURY |
| 7 BERKELEY | 38 GREEN PARK | 69 ST. ANN |
| 8 BEVERLY HILLS | 39 GREENDALE | 70 ST. JOHN |
| 9 BLACK JACK | 40 HANLEY HILLS | 71 SUNSET HILLS |
| 10 BRECKENRIDGE HILLS | 41 HAZELWOOD | 72 SYCAMORE HILLS |
| 11 BRENTWOOD | 42 HILLSDALE | 73 TOWN & COUNTRY |
| 12 BRIDGETON | 43 HUNTLEIGH | 74 TWIN OAKS |
| 13 CALVERTON PARK | 44 JENNINGS | 75 UNIVERSITY CITY |
| 14 CHAMP | 45 KINLOCH | 76 UPLANDS PARK |
| 15 CHARLACK | 46 KIRKWOOD | 77 VALLEY PARK |
| 16 CHESTERFIELD | 47 LADUE | 78 VELDA CITY |
| 17 CLARKSON VALLEY | 48 LAKESHIRE | 79 VELDA VILLAGE HILLS |
| 18 CLAYTON | 49 MANCHESTER | 80 VINITA PARK |
| 19 COOL VALLEY | 50 MAPLEWOOD | 81 WARSON WOODS |
| 20 COUNTRY CLUB HILLS | 51 MARLBOROUGH | 82 WEBSTER GROVES |
| 21 COUNTRY LIFE ACRES | 52 MARYLAND HEIGHTS | 83 WELLSTON |
| 22 CRESTWOOD | 53 MOLINE ACRES | 84 WESTWOOD |
| 23 CREVE COEUR | 54 NORMANDY | 85 WILBUR PARK |
| 24 CRYSTAL LAKE PARK | 55 NORTHWOODS | 86 WILDWOOD |
| 25 DELLWOOD | 56 NORWOOD COURT | 87 WINCHESTER |
| 26 DES PERES | 57 OAKLAND | 88 WOODSON TERRACE |
| 27 EDMUNDSON | 58 OLIVETTE | |
| 28 ELLISVILLE | 59 OVERLAND | |
| 29 EUREKA | 60 PACIFIC | |
| 30 FENTON | 61 PAGEDALE | |
| 31 FERGUSON | 62 PASADENA HILLS | |

Prepared by St. Louis County GIS Service Center
July 2018